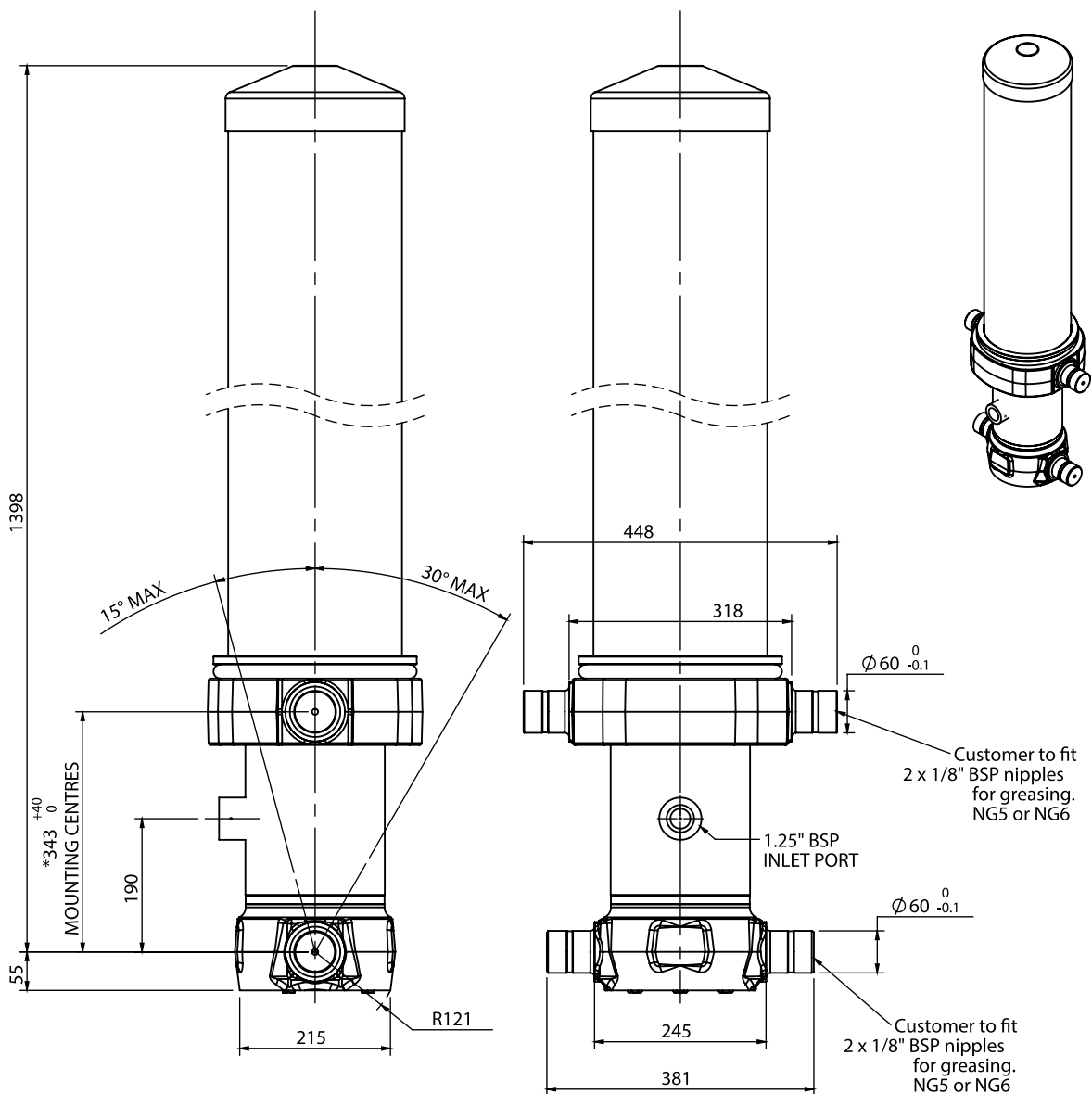


Cylinder 5 stage front end with outer cover

**ALLOW 50mm TO REMOVE CAP FOR SERVICING

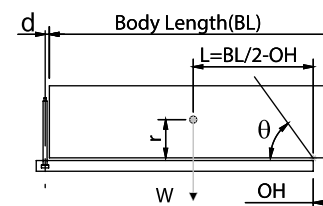


*Includes 7mm Pull Out.

CS17L055483B19A11

SPECIFICATION		TIPPING CAPACITY :		
		30-46 TONNES***		
Stage	Diameter	Length	Stroke	Swept Volume
OUTER COVER	248	1020	-	-
0	199	1325	-	-
1	176	1290	1070	26
2	155	1290	1087	21
3	136	1290	1097	16
4	117	1290	1112	12
5	98	1290	1117	8
Total (+5/-10)			5483	83
Final stroke reduced by	0	Priming Volume	17	
Cylinder Mass (Kg)	249	Total Volume (Litres)	100	
Maximum Pressure (Bar)	190	Max. first stage thrust	200 KN	

***TIPPING CAPACITY AT WORKING PRESSURE



BODY LENGTH (BL)						OH
6750		7250		7750		
34	48°	32	44°	30	41°	150
39	50°	35	46°	32	43°	450
46	53°	40	48°	36	45°	750

d = 229; r = 900; Working Pressure 135 bar

For guidance only;
Higher working pressures and tipping capacities may be possible.
To check your application email - applications@edbro.co.uk

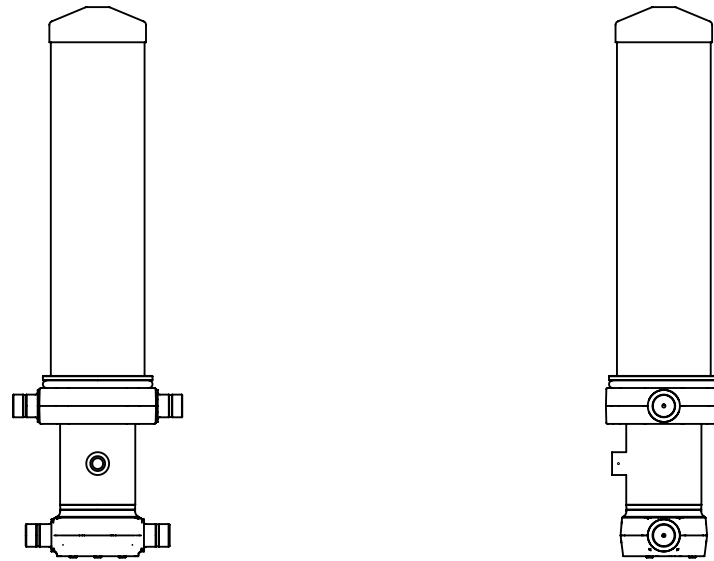
NOTES

1. This cylinder is for lifting purposes only and side load conditions should be avoided
2. Cylinder is painted in primer paint to RAL5013
3. Refer to www.edbro.com for;-
 - Bracket details
 - Installation instructions that must be observed
 - Correct oil selection
 - An explanation of tipping capacity



Hoppe-Truck-Hydraulik GmbH & Co.KG
 Püßelbürener Damm 244, 49479 Ibbenbüren
 Tel.: +49 (0) 5451-50230320, Fax: +49 (0) 5451-50230348
 Email: info@hoppe.parts Web: www.hoppe.parts





CS17L055483B19A11